



ARISTON

# SPARE PARTS EXPLODED VIEW GAS-WALL BOILER ATM. BURNER

Model

## HS X - CARES X

R8203464-13 - 13/01/2022

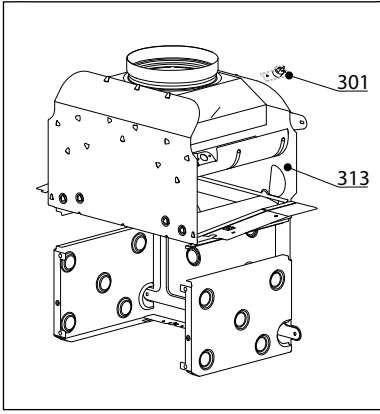
HS X - CARES X

Gas-wall boiler atm. burner

1	3300897	HS X 15 CF NG	09-2016	09-2019
2	3300896	HS X 24 CF NG	09-2016	-
3	3301527	HS X 10 FF NG	06-2019	06-2021
4	3300895	HS X 15 FF NG	09-2016	06-2021
4	3300946	HS X 15 FF (RU)	12-2016	02-2020
4	3301334	HS X 15 FF (RU)	07-2018	06-2019
5	3300894	HS X 18 FF NG	09-2016	-
6	3300893	HS X 24 FF NG	09-2016	-
6	3301337	HS X 24 FF NG	09-2018	01-2020
7	3300889	CARES X 15 CF NG	09-2016	-
8	3300888	CARES X 24 CF NG	09-2016	-
9	3301526	CARES X 10 FF NG	06-2019	06-2021
10	3300887	CARES X 15 FF NG	09-2016	06-2021
11	3300886	CARES X 18 FF NG	09-2016	06-2021
12	3300885	CARES X 24 FF NG	09-2016	06-2021
12	3301332	CARES X 24 FF NG	09-2018	01-2020
13	3300891	CARES SYSTEM X 24 CF NG	12-2016	07-2018
14	3300890	CARES X SYSTEM 24 FF NG	12-2016	07-2018

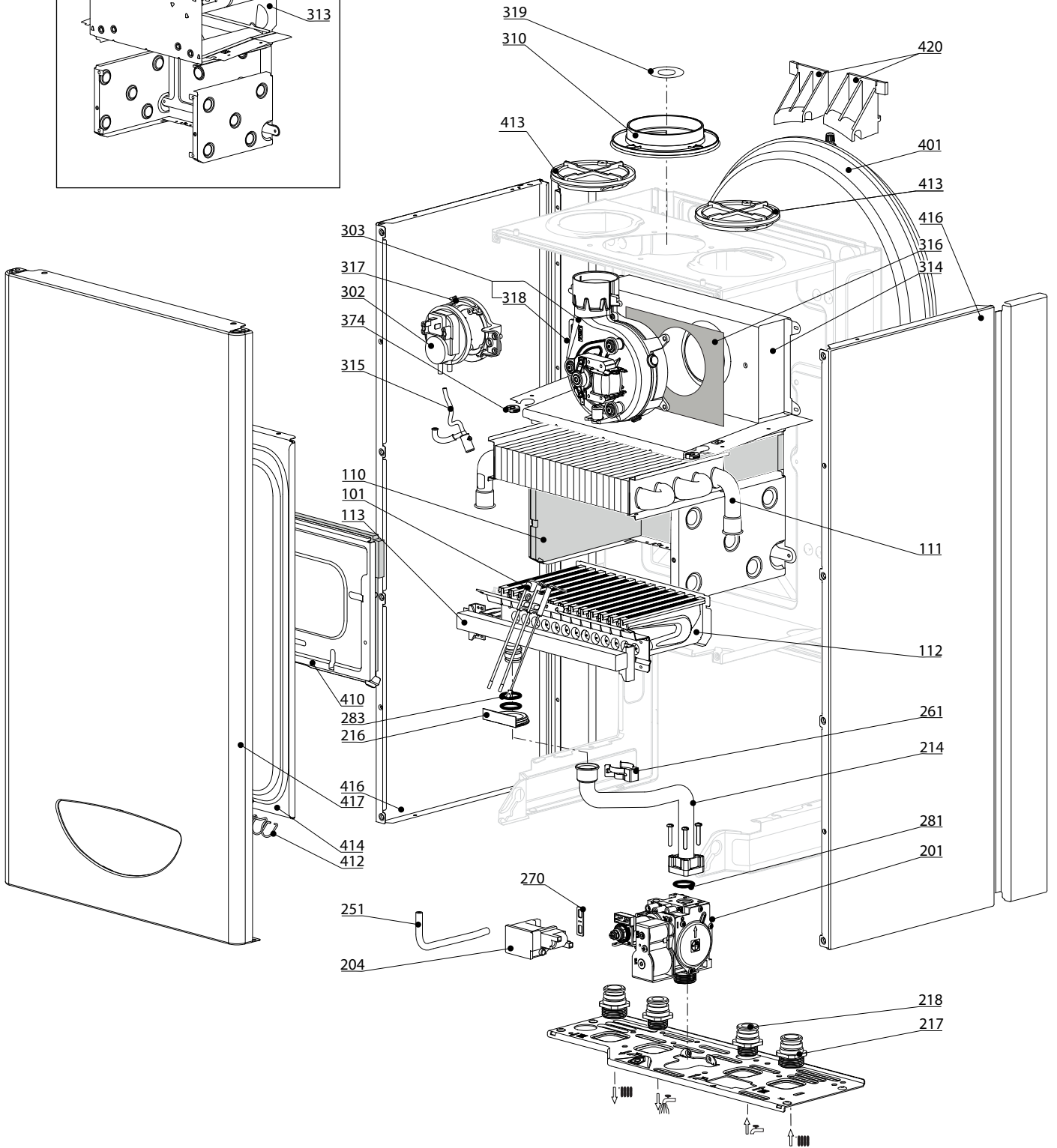
Col	Reference	Model type	Begin	End
-----	-----------	------------	-------	-----

100  
200  
300  
400

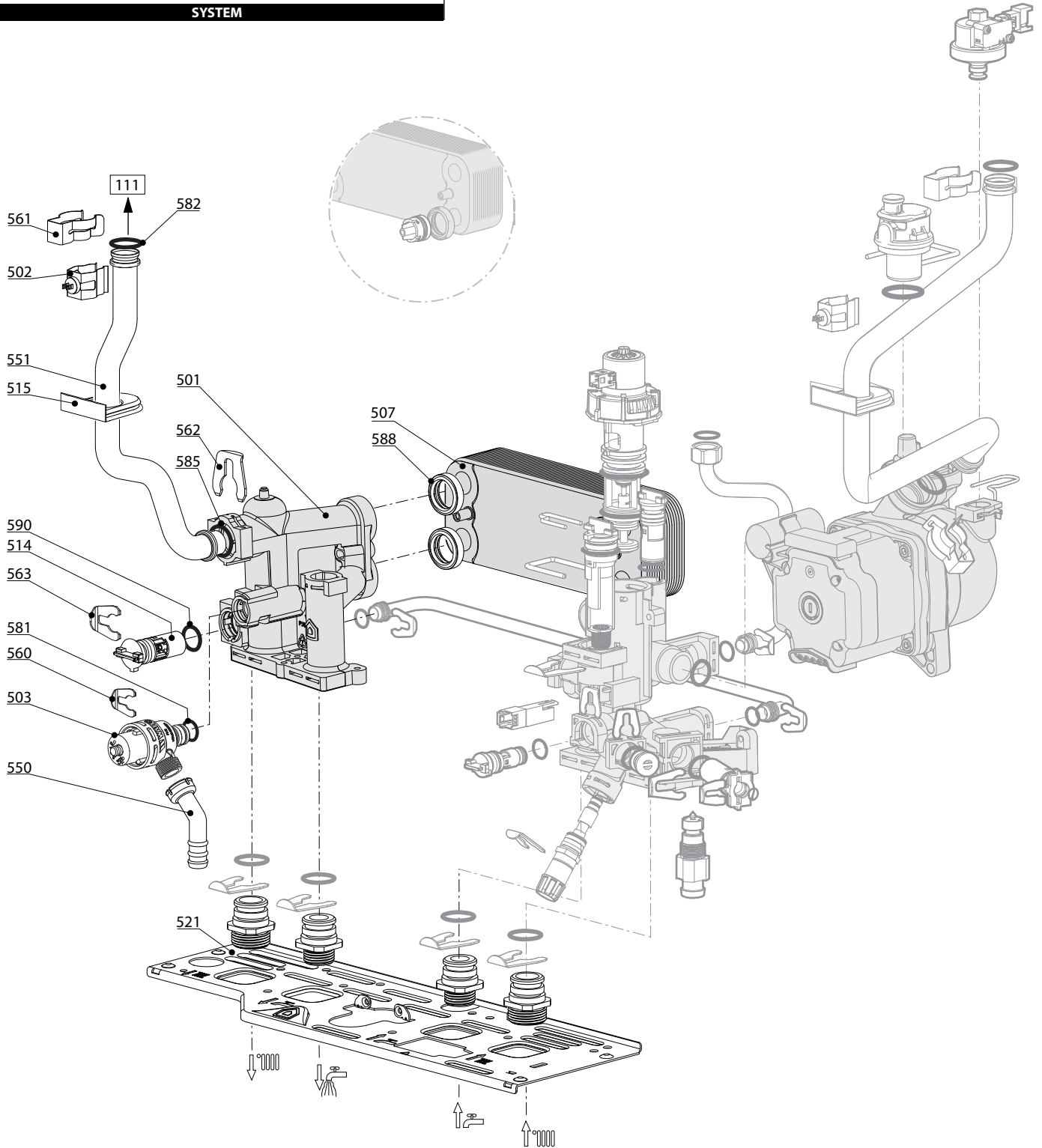
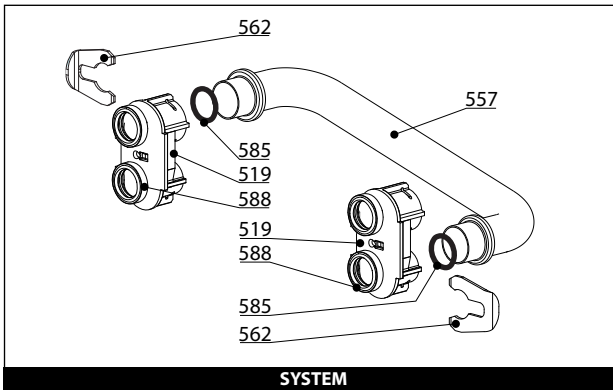


HS X - CARES X

Gas-wall boiler atm. burner

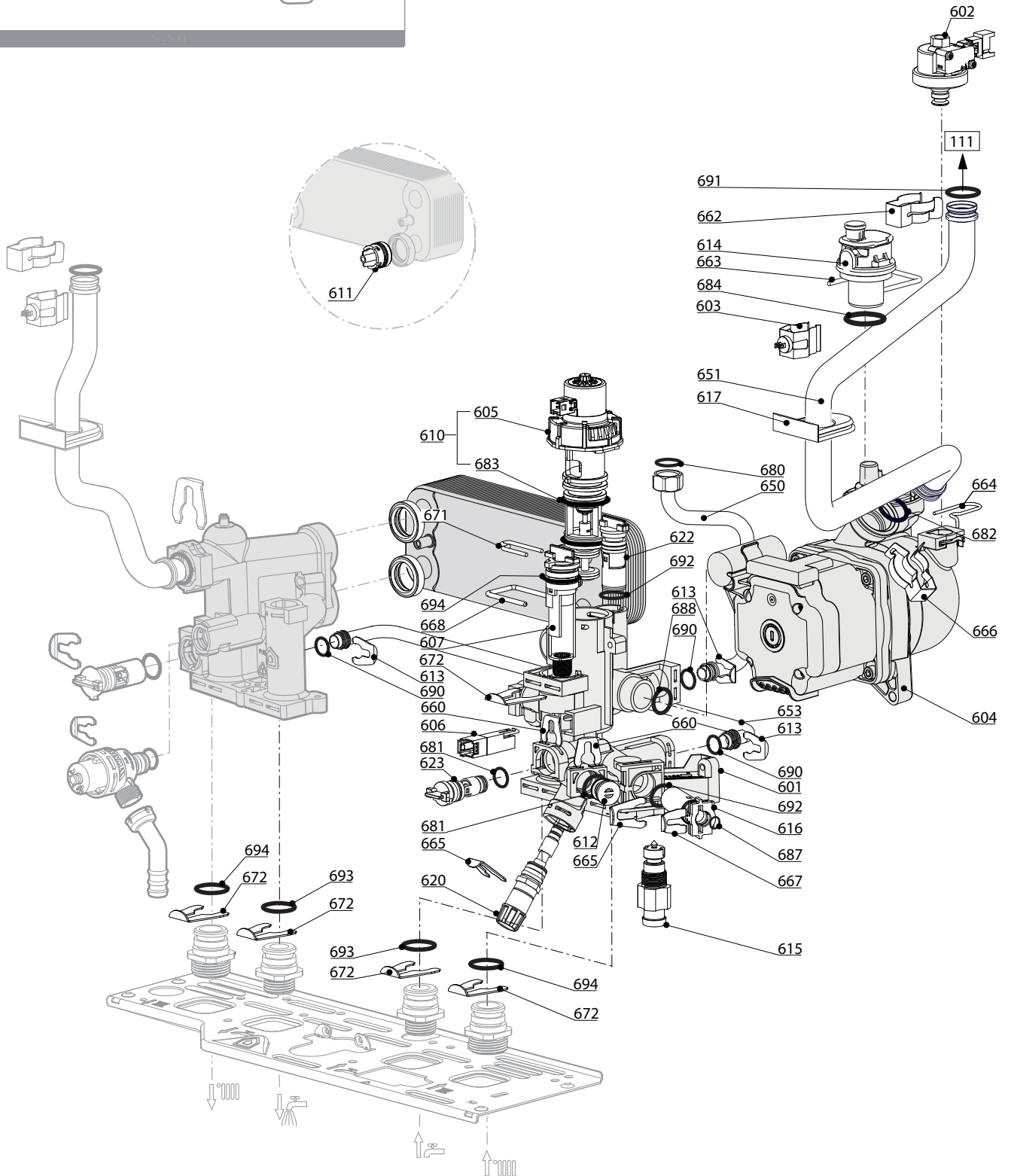
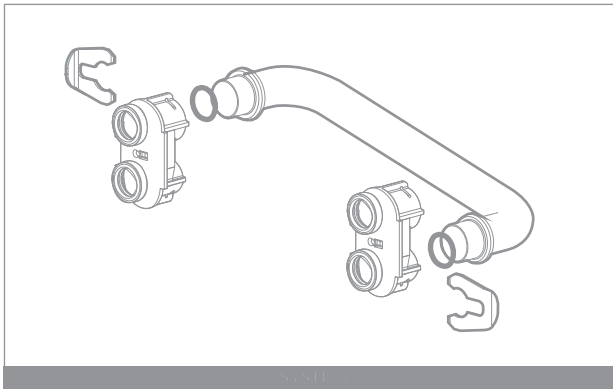






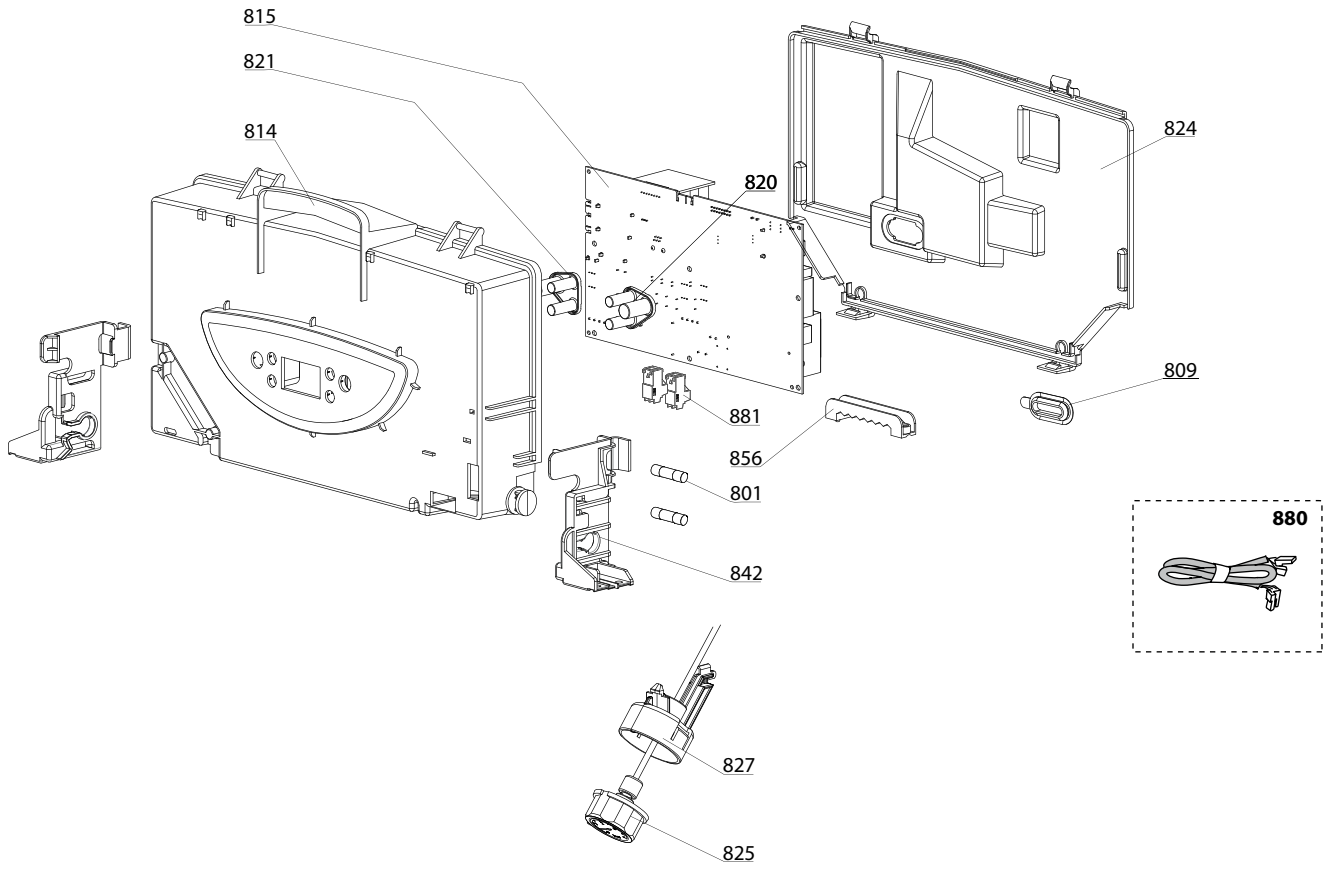
☉⇒	Description	Manf. Pt. N	Type																			From	to
				1	2	3	4	5	6	7	8	9	10	11	12	13	14	15	16	17	18		
0500	<b>FLOW GROUP</b>																						
0501	ГРУППА ПОДАЧИ	65115933		●	●	●	●	●	●	●	●	●	●	●							05/18		
	ГРУППА ПОДАЧИ	65115933													●	●							
	ГРУППА ПОДАЧИ	65117952		●	●	●	●	●	●	●	●	●	●	●						06/18			
0502	ДАТЧИК ТЕМПЕРАТУРЫ + КЛИПСА	990686-01		●	●	●	●	●	●	●	●	●	●	●	●	●	●	●	●				
0503	ПРЕДОХРАНИТЕЛЬНЫЙ КЛАПАН (3 БАРА)	61312668		●	●	●	●	●	●	●	●	●	●	●	●	●	●	●	●				
0507	ТЕПЛООБМЕННИК ГВС (16 ПЛАСТИН)	65104333		●	●	●	●	●	●	●	●	●	●	●	●	●	●	●	●				
0514	БАЙПАС	65114917		●	●	●	●	●	●	●	●	●	●	●	●	●	●	●	●				
0515	УПЛОТНЕНИЕ	60000808		●	●	●	●	●	●	●	●	●	●	●	●	●	●	●	●				
0519	ПЕРЕХОДНИК 'SYSTEM +' OPEN	60001365													●	●	●	●					
0521	ОСНОВАНИЕ ГИДРАВЛИЧЕСКОЙ ГРУППЫ	65115797		●	●	●	●	●	●	●	●	●	●	●	●	●	●	●	●				
0550	ПАТРУБОК ПРЕДОХРАНИТЕЛЬНОГО КЛАПАНА	60001955		●	●	●	●	●	●	●	●	●	●	●	●	●	●	●	●				
0551	ТРУБКА ПОДАЧИ ТЕПЛОНОСИТЕЛЯ (AL)	65115067	NOTE 2	●	●	●	●	●	●	●	●	●	●	●	●	●	●	●	●				
	ТРУБКА ПОДАЧИ ТЕПЛОНОСИТЕЛЯ (Cu)	65115763	NOTE 1	●	●				●	●					●								
	ТРУБКА ПОДАЧИ ТЕПЛОНОСИТЕЛЯ (Cu)	65115915	NOTE 1			●	●	●	●			●	●	●	●	●	●	●	●				
0557	ТРУБКА (D.H.W.RETURN)	65115935													●	●	●	●					
0560	КЛИПСА D:10	65114933		●	●	●	●	●	●	●	●	●	●	●	●	●	●	●	●				
0561	КЛИПСА	61307589		●	●	●	●	●	●	●	●	●	●	●	●	●	●	●	●				
0562	КЛИПСА D:18	65104259		●	●	●	●	●	●	●	●	●	●	●	●	●	●	●	●				
0563	КЛИПСА D:12	65114932		●	●	●	●	●	●	●	●	●	●	●	●	●	●	●	●				
0581	O-КОЛЬЦО 17.96X2.62	65104337		●	●	●	●	●	●	●	●	●	●	●	●	●	●	●	●				
0582	O-КОЛЬЦО 17.86X2.62	61308091		●	●	●	●	●	●	●	●	●	●	●	●	●	●	●	●				
0585	O-КОЛЬЦО 17.04X3.53	65104262		●	●	●	●	●	●	●	●	●	●	●	●	●	●	●	●				
0588	ПРОКЛАДКА ТЕПЛООБМЕННИКА	65114928		●	●	●	●	●	●	●	●	●	●	●	●	●	●	●	●				
0590	O-КОЛЬЦО 11.91X2.62	65114940		●	●	●	●	●	●	●	●	●	●	●	●	●	●	●	●				

Note 1: For appliances with main exchanger in copper. - Note 2: For appliances with main exchanger in aluminium.

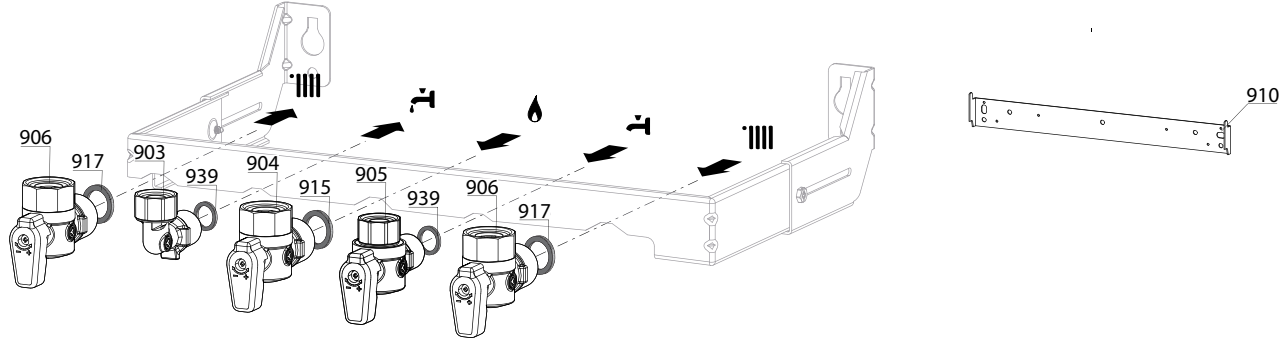




800



900



5000

**5001**  
 Transf. gaz  
 Conv. gas  
 Trsf. gas  
 Transf. gas  
 > **G31**  
 (LPG - GPL)

**5002**  
 Transf. gaz  
 Conv. gas  
 Trsf. gas  
 Transf. gas  
 > **G20**  
 (NAT - MET)

Accessories **5020**  
 Options  
 Opzioni  
 Accessorio  
 Zubehör  
 Opties





## LIST OF THE ABBREVIATIONS

HW .....	: Hot water.
CW .....	: Cold water.
C .....	: Ceramic resistance (normal heating).
Ca .....	: Ceramic resistance (accelerated heating)
TP .....	: Immersion heater.
1F .....	: With fittings.
2F .....	: Without fittings.
3F .....	: With fittings and another outlet connection.
AMI .....	: With mixing valve.
SMI .....	: Without mixing valve.
PUISS .....	: Power of th appliance.
PN .....	: Appliance with normal pression.
LP .....	: Appliance with low pression.
PV .....	: Appliance with variable power.
PF .....	: Appliance with fixed power.

## IDENTIFICATION PLATE

### SERIAL NUMBER

<b>10 Characters :</b>	04 05 125 011	Sequential number Manufacturing day Year of manufacture
<b>11 Characters :</b>	1 95 065004 - 31	Technical number of the appliance Sequential number Year of manufacture
Month of manufacture : from 1 to 9 → Jan. to Sep., O → Oct., N → Nov., D → Dec.		
<b>19 Characters :</b>	08 05 0013199 900640031	Product reference Sequential number
Year of manufacture Month of manufacture		
<b>20 Characters :</b>	3675007 XX 2 07 070 00315	Sequential number Manufacturing day Year of manufacture
Product reference Millenium of manufacture		
<b>21 Characters :</b>	3675007 XX 07 070 0000315	Sequential number Manufacturing day
Product reference Year of manufacture		